

TEMPERATURE SENSOR



Features

The EnOcean Temperature Sensor indicates the temperature in a room every 100 seconds. It reports the information to the home automation gateway when a variation of 0.5°C is detected to ensure an efficient heating management.



BATTERY-FREE

The light refills the sensor with energy



QUICK INSTALLATION

Wireless, mounting with double-sided adhesive or with screws



OPTIONAL BATTERY

A CR1216 battery can be added for use in a dark area

Technical specifications

Power source: solar panel (photovoltaic) for 3 days autonomy

Autonomous operation: 100 Lumens

Measurement range 0°C to 40°C (0.1°C resolution)

Indoor use

Wall mounting using adhesive strips (included) or screws (not included)

Operational temperature: 0°C to 40°C

First use without battery needs a light load <10 minutes

Optional CR1216 battery (not included) for dark area use

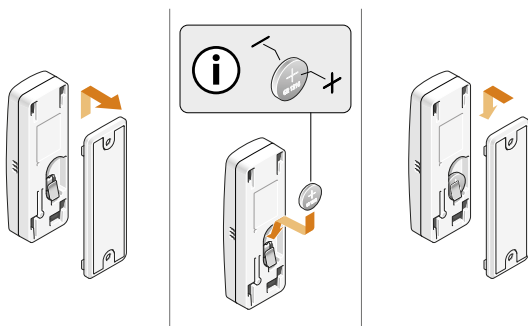
Autonomy in total darkness: 3 years

Pairing button at the back of the sensor

Radio frequency range: 868.0 to 868.6 MHz or 905 to 915 MHz (according to the reference)

Range: up to 30m indoors

EEP (EnOcean Profile): A5-02-05



List of compatible home automation gateways available on www.nodon.fr

Comfort

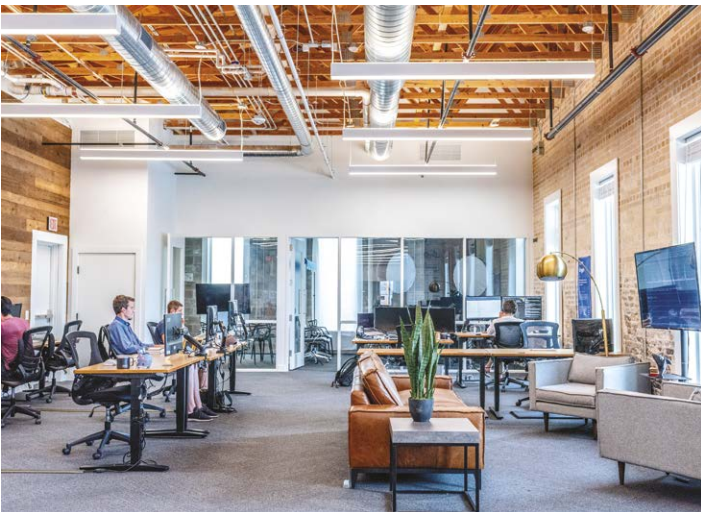


Regulate the heating at 0.5°C for the occupant's comfort*

Energy savings



Launch the scenario: turn the heating system OFF when the shutters are opened to let the outside heat come in to warm up the room*



Control the temperature of a room and receive information every 15 to 30min*

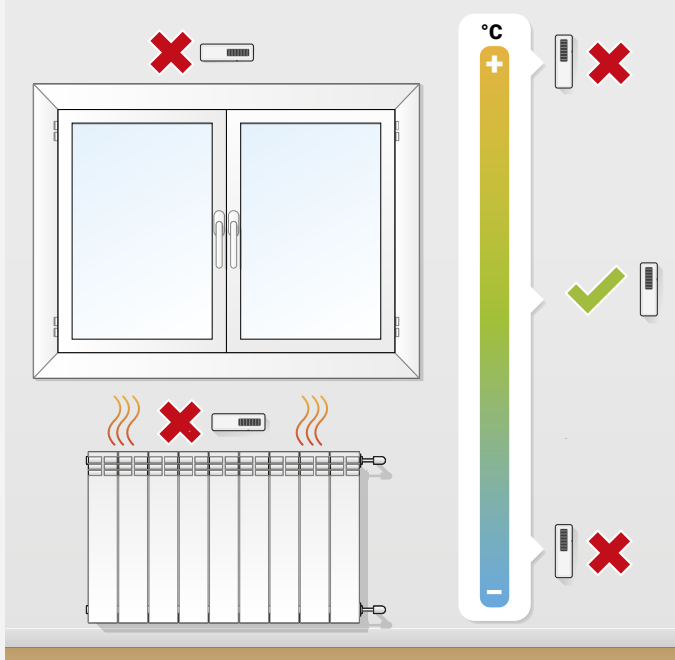
Protection



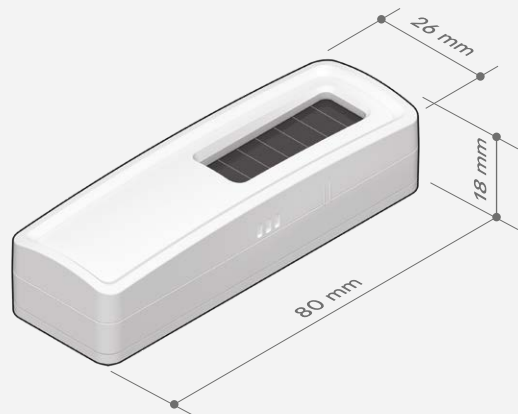
Monitor the temperature in the cellar or the wine cellar*

*Home automation gateway needed

Installation



Dimensions



References

Frequency 868.0 MHz to 868.6 MHz:
STP-2-1-05 - EAN: 3700313920183

Frequency 905 to 915 MHz:
STP-2US-1-05 - EAN: 3700313920800